

Documenting Adagio Table and Column changes

April 9, 2018

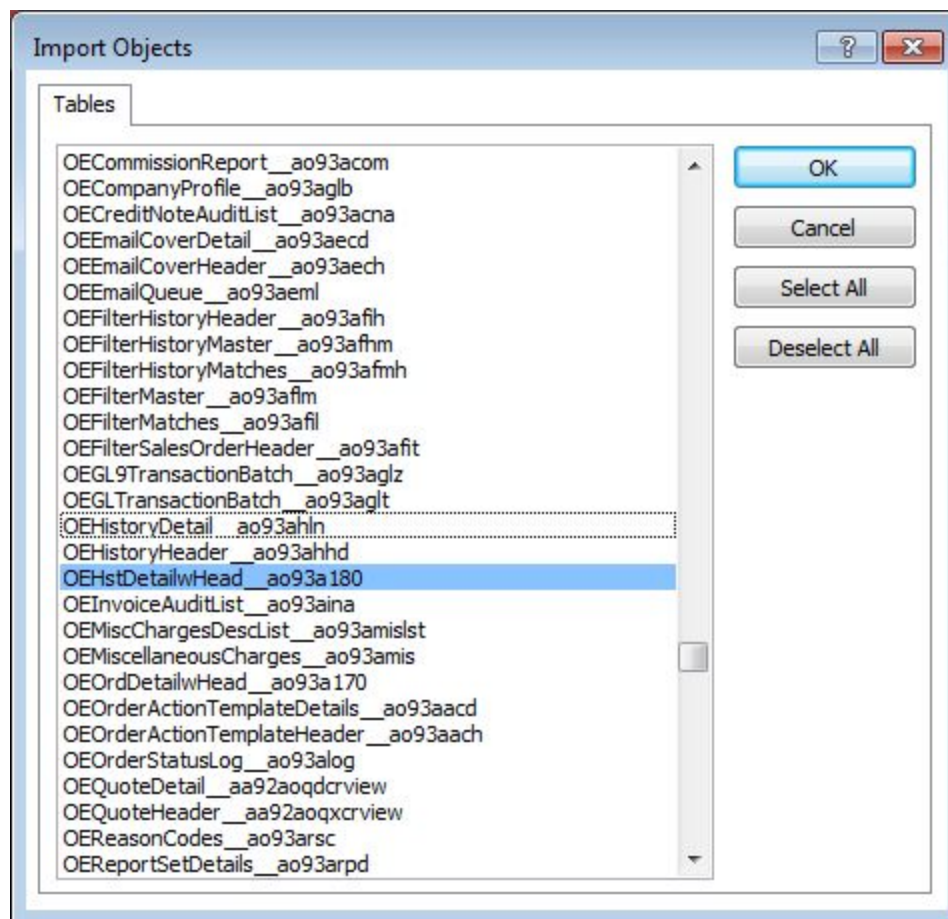
Gregg Holbert, CPA

gregg@CraftParts.com

I am writing this to document changes to Tables and Columns in the recent Adagio update. We utilize SQL queries via an ODBC connection to extract information from our three Adagio databases and combine those together to get actionable business information (such as Combined Inventory.)

We were told that there should have been no changes to tables - but there were.

This first Microsoft Access screenshot shows a partial alphabetical Table listing from Adagio after the recent update.

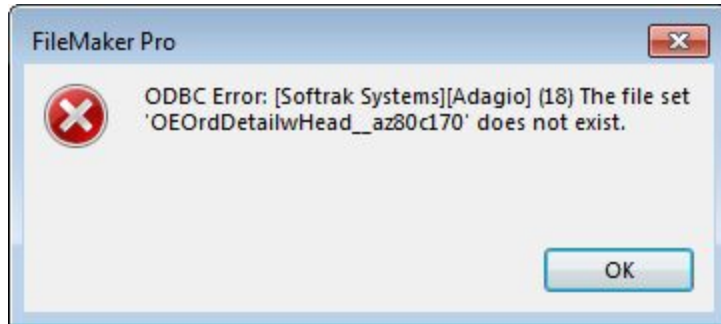


I hypothesize that while working within the Adagio environment that the “version” part of a Tablename is ignored. For example, I know that the following tables had version number changes:

- **ICItemLocationsMaster__an81cilm** became **ICItemLocationsMaster__an92ailm**

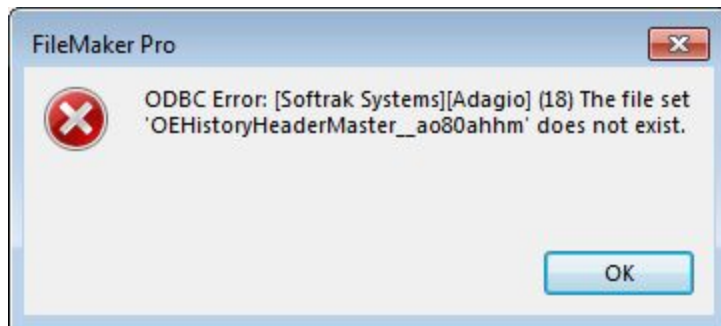
- ***OEOrdDetailwHead__az80c170*** became ***OEOrdDetailwHead__ao93a170***
- ***OEHstDetailwHead__ao80a180*** became ***OEHstDetailwHead__ao93a180***

Unfortunately, we find these changes not by being told about them - but by our SQL no longer working. We get errors like this one.



We can then do the work of fixing the SQL behind the scenes to update the table name.

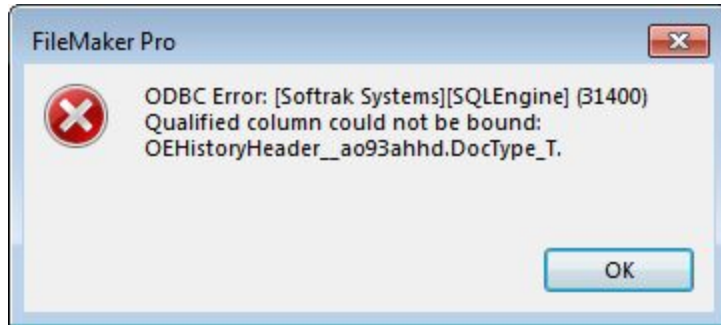
However, there are two more scenarios that are more stressful. The first is that there was at least one table whose name changed completely. I received the following error:



After much research I finally concluded that the new Table name no longer included the word "Master". The table ***OEHistoryHeaderMaster__ao80ahhm*** became ***OEHistoryHeader__ao93ahhd***.

I had to analyze the fields to deduce this was the new table name.

The second more stressful scenario is when fields are renamed or disappear. I received the following error:



Per my analysis using Microsoft Access via ODBC to view the Adago tables, the field named "***DocType_T***" no longer exists. Fortunately, I was able to deduce that "***DocType***" contained a single letter abbreviation for the full text previously contained in "***DocType_T***"; e.g. ***DocType*** "I" = ***DocType_T*** "Invoice".

I do not have first hand documentation of the previous tables except that the SQL statements as previously written had been running successfully for a year. They broke after the update.

I would like to know in the future if there is anyway I could have found this out ahead of time?